

◆ Oszilla 30/50 Multi-functional Floor Cleaning and Grinding Machine

Sub-agency
Regional dealer (to stamp)



Charlott produkte Dr. Rauwald GmbH
Pappelbreite 1-2
37176 Nörten-Hardenberg

Tel: + 49 (0)5503 800 800
Fax: + 49 (0)5503 800 810
E-Mail: info@dr-rauwald.de
Internet: www.dr-rauwald.de

Dr. Rauwald

Reinigungssysteme

Oszilla 30/50

Multi-functional Floor Cleaning and Grinding Machine



User Manuel

User Manual

Oszilla 30/50

Multi-functional Floor Cleaning and Grinding Machine

General Precautions:

1. Make sure that you disconnect the plug from the socket before cleaning or repairing the machine. Always pull the plug, not the cable. Otherwise, you may damage the power outlet and the machine.
2. If you are using a cable extension, it must be approved for working in wet areas.
3. If the cable is damaged or broken, it must be replaced by the manufacturer's service or by qualified personnel.
4. Never use the machine if the cable is damaged. There is a risk of electric shock. You endanger yourself and others!
5. Disconnect the plug after the machine has been switched off. Not the other way around!

Table of contents

Technical parameters	1
Main structure	2
Illustration of the handle	3
Illustration of the motor	4
Illustration of the tank	5
Handling operations	6
Operating procedures and cautions	7
Maintenance and Repair	7
Main errors and troubleshooting	8
Assembly	8

This user manual contains technical information about the machine.

Technical Parameters:

Oszilla 30/50 Multi-functional Cleaning and Grinding Machine

Type:	Oszilla 30/50
Voltage:	220V ~/50Hz
Power:	1.500W
Current:	9 A
Speed of rotation:	2.800 rotation/min
Operating noise:	≤75dB
Power cord length:	12m
Base disc size:	480x330mm
Weights:	8 x 3,5 kg
Net weight:	46 kg
Brutto Weights:	86 kg
Accessories:	Cleaning pads (white, red, black) ONE STEP® Combo-Pad
Main functions:	Basic cleaning, grinding
Suitable floors:	Wooden floors, stone tiles, terracotta, carpets, polyolefin covering

Main structure:

This cleaning and grinding machine is characterised by simple and safe operation as well as high cleaning performance and is suitable for professional use in public and industrial areas. Both the cleaning and the renovation of hard floors can be its focus. Thanks to the high area output and simple operation, the machine saves a lot of time when cleaning and renovating hard floors. This makes the Oszilla 30/50 an important and multifunctional cleaning device that is essential for modern basic and maintenance cleaning.

The machine consists of the following parts:

1. Hand guide lever
2. Fuse switch
3. Handle switch
4. Steel pipe
5. Tank emptying button
6. Main power cable
7. Holder for tank
8. 12 l tank
9. Angle adjustment of the bracket
10. Supply line
11. Lye hose
12. Upper motor cover
13. Motor
14. 6 inch impeller
15. quick span
16. additional weights
17. Chassis frame
18. Cleaning plate

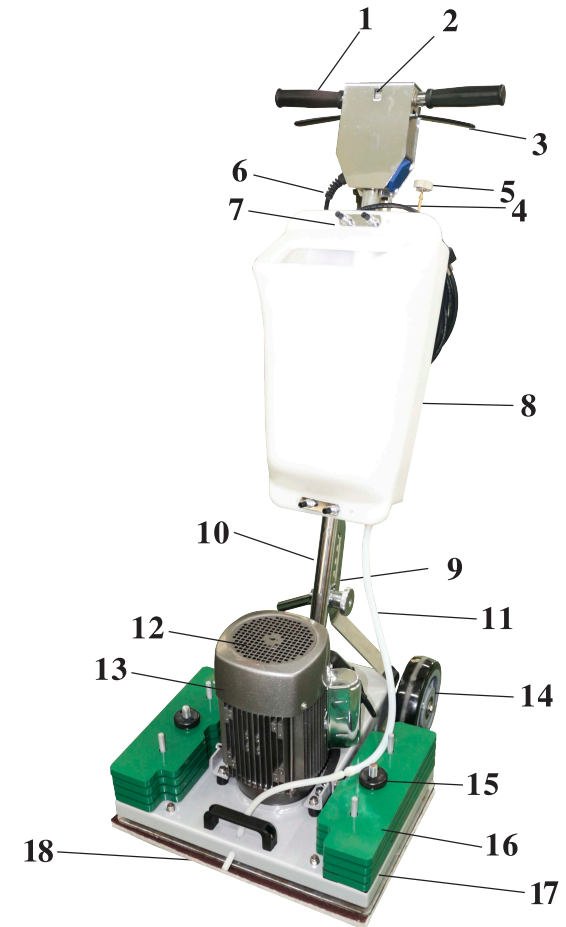


Illustration of handle :

Oszilla 30/50 Multi-functional Cleaning and Grinding Machine

1.	Handle housing	1 piece
2.	Screw	2 pieces
3.	Spring	2 pieces
4.	Elastic pin	2 pieces
5.	16A Fuse	1 piece
6.	Aluminum hooks	1 piece
7.	Micro switches	1 piece
8.	Rubber pads	1 piece
9.	10A Overload protection	1 piece
10.	PG9 extended spring	1 piece
11.	Power cable	1 piece
12.	Tubular frame	1 piece
13.	Spring	1 piece
14.	Steel sheath	2 pieces
15.	Grip sleeve	2 pieces
16.	Steel rod	1 piece
17.	Socket	1 piece
18.	Case blue	1 piece
19.	M10 hole nut	1 piece
20.	Adjustment lever	1 piece
21.	Main part handle	1 piece
22.	Handle clamping plate	2 pieces
23.	Left and right bracket	2 pieces
24.	Outlet cabel	1 piece
25.	Outer hexagon head screw	1 piece
26.	1.3m lead wire	1 piece
27.	Waterproof cover	1 piece
28.	washer	1 piece
29.	Self-locking nut	1 piece

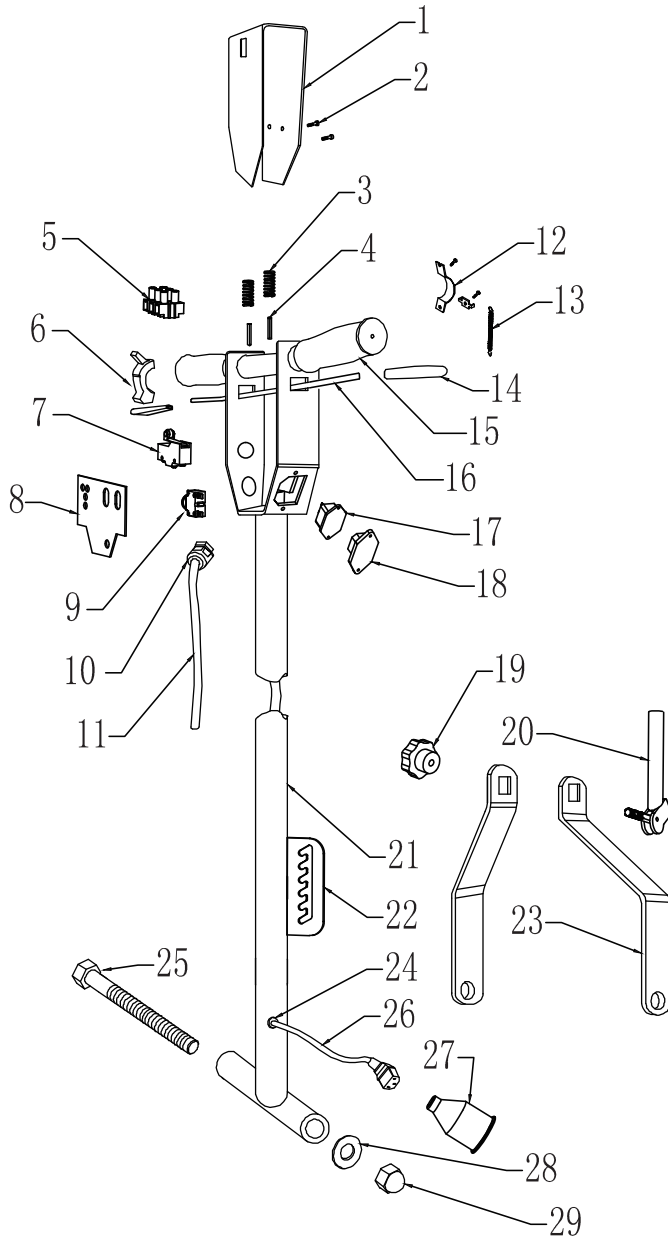


Illustration of the motor:

Oszilla 30/50 Multi-functional Cleaning and Grinding Machine

1.	Motor	1 piece
2.	M10 hole nut	2 pieces
3.	Weight right	4 pieces
4.	Weight left	4 pieces
5.	Brackets wheel axle	2 pieces
6.	6-inch wheel	2 pieces
7.	M8 screw	2 pieces
8.	Chassis mount	1 pieces
9.	Vibration column	4 pieces
10.	Vibration column seal	4 pieces
11.	Motor shaft sleeve	1 piece
12.	Eccentric disc	1 piece
13.	Vibration plate connection	1 piece
14.	Bracket (NTN 6007)	1 piece
15.	Vibration plate	1 piece
16.	Screw KCM6X16	8 pieces
17.	Screw KCM8X20	4 pieces
18.	Intermediate layer (optimal)	1 piece
19.	Cleaning pad	1 piece

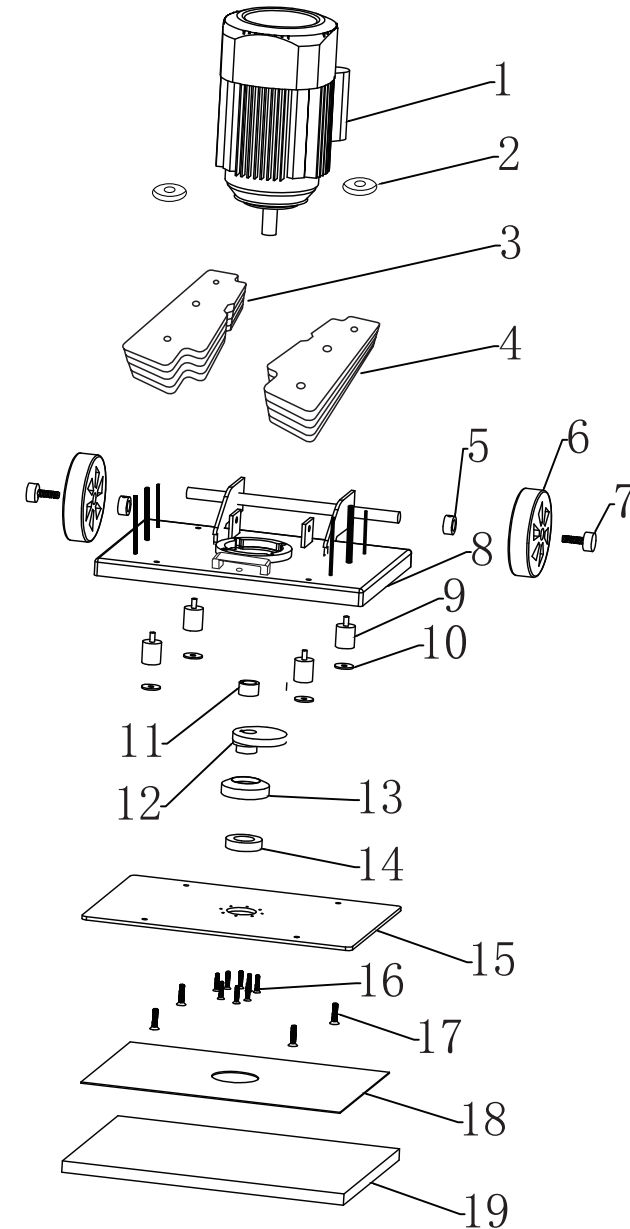
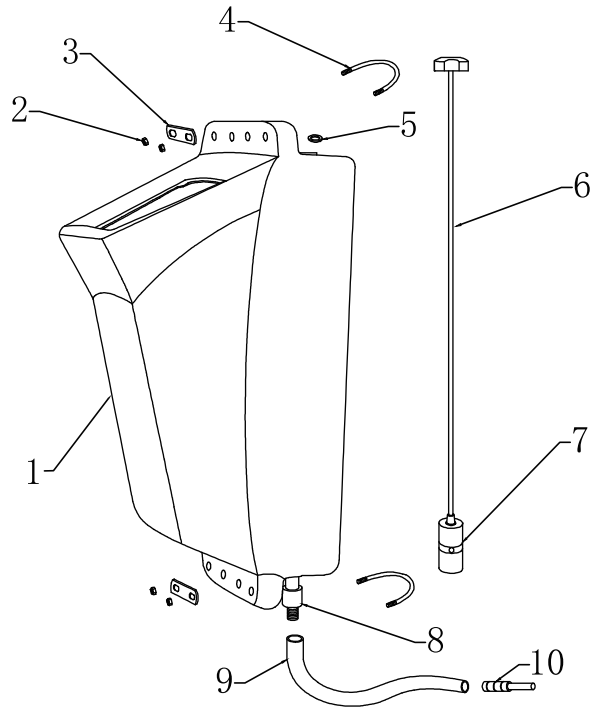


Illustration of the tank:

Oszilla 30/50 Multi-functional Cleaning and Grinding Machine

1.	tank	1 piece
2.	Screw	4 pieces
3.	Clamp	2 pieces
4.	U-shaped buckle for clamp	2 pieces
5.	Fixed coil	1 piece
6.	Rod drain plug	1 piece
7.	Drain valve	1 piece
8.	Water outlet	1 piece
9.	Caustic hose	1 piece
10.	Outlet nozzle	1 piece



Cleaning pads



Cleaning Pad white, red, black, ONE STEP Combo-Pad

Handling operations:

Oszilla 30/50 Multi-functional Cleaning and Grinding Machine

1. Handle body: The handle body is equipped with a main switch and a fuse.
2. Protective function: *This is available to conveniently lift the angle adjustment lever. By releasing the push handle buckle and pushing the angle adjustment lever down to lock it, the handle can be fixed in a 90° position. In normal operation, the angle adjustment lever should be lifted upwards and the handle rotated to a normal angle for the operator (approximately 45 degrees to the ground). Then push the angle adjustment lever down and lock it to fix the control lever.*

At the beginning of the cleaning work, press down the middle safety switch and simultaneously pull up the left or right handle switch to start the engine and start the cleaning work.

3. The handle of the main switch is used to switch the main switch on and off.

4. The angle adjustment lever for the handle is used to adjust the angle of the handle.

5. The control lever of the water tank is used to drain the fleet.

The cleaning tank can be filled with clear water or with cleaning solution (moderately alkaline or acidic), depending on the cleaning task. The drain handle opens the valve and the cleaning solution flows onto the floor in front of the machine.

The single-phase asynchronous motor consists of high-quality components, such as cold rolled silicon steel sheets and is characterized by high performance and low heat loss. The planetary gear is made of high-quality steel. It ensures low-vibration operation of the machine. Both the motor cover and the hose are made of high-quality steel to ensure sufficient structural strength and an attractive appearance

Operating procedures and precautions:

1. The machine is pre-installed. After unpacking, please mount the hose, the handle and the water tank.
2. The cleaning pad or grinding wheels must be fitted as shown in the illustration. Never operate the machine without the pad fitted. Otherwise, you destroy the microstructure of the pad holder.
3. Attention: to be able to work safely with Combo-Pads, they must never protrude beyond the wheel of the driving plate.
4. Depending on the cleaning task, pour the cleaning solution into the caustic tank.
Grinding work can be carried out both dry and wet. Please check with the manufacturer of the floor beforehand. The fact that sanding work can also lead to damage to the floor covering must be taken into account during work planning.
5. Appropriately load the machine with the additional weights to suit the cleaning task and the floor covering. To do this, open the central quick-release fastener, place the same number of weights on the right and left and secure the stack securely using the quick-release fasteners.
6. Adjust the handle to a height appropriate for the operator.
7. When starting the machine, it should be held with both hands. Depending on the pad type and ground conditions, the machine can make a slight sideways movement in any direction when starting.
8. Work at a reasonable speed. The machine responds to light pressure and moves in the desired direction.
9. When you release the handle of the power switch, the machine switches off automatically. It can make a slight sideways movement like when starting.
10. When the cleaning work is complete, the handle should be moved to a vertical 90° position, the cleaning pad washed out and reassembled under the machine. The remaining solution should be drained from the caustic tank and then rinsed with some clean water. Then clean the machine with a clean cloth to extend the life of the machine.
11. It is forbidden to load the machine with additional weight. This can lead to destruction. Never allow a second person to climb onto the machine to increase the weight. There is a high risk of injury!
12. In order to avoid power failures or damage to the motor, the machine may only be used outdoors if no rain is to be expected. Never leave the machine outdoors overnight.

Maintenance and repair:

1. The entire machine is moisture resistant. The machine will operate properly under normal conditions as long as no water penetrates into the motor. During use, water and detergents must not penetrate directly into the socket or machine to avoid short circuits or electric shocks.
2. Do not open the engine. If it turns out that the motor or gear unit is faulty, please contact the manufacturer or a specialist company.
3. It is not permitted to replace the operating or starting capacitor with a capacitor whose capacitance and voltage resistance do not meet the requirements of the machine, otherwise the motor will be damaged.

Main errors and troubleshooting:

Number:	Error:	Possible cause of error:	Troubleshooting:
1.	The motor does not rotate	The power cord is not connected properly. Check the power cord connection.	The overload circuit breaker has tripped out. Reset the overload circuit breaker. The power switch is damaged. Replace the power switch.
2.	The engine start is slow	Contact a service technician.	The starting capacitor may have to be replaced.
3.	The engine power is insufficient	Contact a service technician.	Either the operating capacitor is damaged or the motor winding is damaged.
4.	The motor does not stop after the power switch has been turned off	The main switch is faulty	Replace the main switch.
5.	The motor is blocked	The eccentric disc does not work or very abnormal noises can be heard.	The eccentric gear is damaged by an overload process or the screw connection of the vibration plate has come loose or is damaged. Contact a service technician for assistance.

Assembly:

1. Hose - 1 piece
2. The operating handle 1.3m supply cable and main cable (on the handle) - 1 piece
3. Water tank - 1 piece
4. Cleaning pad - 3 pieces + 1 ONE STEP® Combo-Pad
5. User manual
6. Additional weights - (4 pieces each on right and left)
7. Quick-release fastener - 2 pieces + tool
8. Transport case for additional weights

Copyright: Dr. Rauwald Reinigungssysteme

Reprinting, even in extracts, is only permitted with the consent of the copyright holder.